



# Office of General Services

DESIGN & CONSTRUCTION GROUP  
THE GOVERNOR NELSON A. ROCKEFELLER  
EMPIRE STATE PLAZA  
ALBANY, NY 12242

---

## ADDENDUM NO. 1 TO PROJECT NO. 47608

HVAC WORK  
REPLACE AIR HANDLER  
HOLLAND AVENUE OFFICE BUILDING  
ALBANY, NY 12208-3411

May 9, 2025

**NOTE:** This Addendum forms a part of the Contract Documents. Insert it in the Project Manual. Acknowledge receipt of this Addendum in the space provided on the Bid Form.

### DRAWINGS

1. Drawing No. E-101:
  - a. Modified drawing note 4. to read: "4. PROVIDE (2) 3P-30A CIRCUIT BREAKER FEEDER UNITS COMPATIBLE WITH EXISTING 277/480V SQUARE-D MODEL 3 MCC. CONTRACTOR MAY FURNISH UL LISTED RECONDITIONED AFTER-MARKET MCC BUCKETS OR HAVE A UL-LISTED ASSEMBLER FABRICATE EQUIVALENTS. PROVIDE ALL ITEMS TO MEET ORIGINAL UL INTENT AND SQUARE D MODEL 3 RATINGS. "

**END OF ADDENDUM**

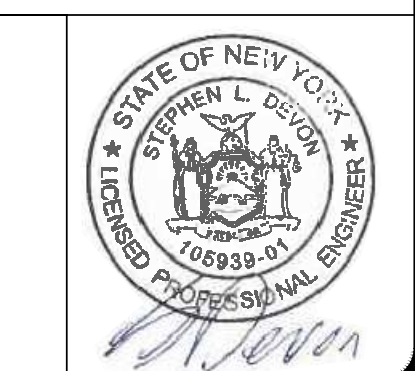
Brady M. Sherlock, P.E.  
Director, Division of Design  
Design & Construction

**rmf**  
 RMF ENGINEERING, P.C.  
 3 PINE WEST PLAZA, SUITE 308  
 ALBANY, NY 12205

**WARNING:**  
 THE ALTERATION OF THIS MATERIAL IN ANY WAY, UNLESS DONE UNDER THE DIRECTION OF A COMPARABLE PROFESSIONAL, I.E. ARCHITECT FOR AN ARCHITECT, ENGINEER FOR AN ENGINEER OR LANDSCAPE ARCHITECT FOR A LANDSCAPE ARCHITECT, IS A VIOLATION OF THE NEW YORK STATE EDUCATION LAW AND/OR REGULATIONS AND IS A CLASS 'A' MISDEMEANOR.

**NYS ENERGY CODE STATEMENT:**  
 TO THE BEST OF THE REGISTERED DESIGN PROFESSIONAL'S KNOWLEDGE, BELIEF, AND PROFESSIONAL JUDGEMENT, THESE PLANS AND/OR SPECIFICATIONS ARE IN COMPLIANCE WITH THE 2020 ENERGY CODE OF NEW YORK STATE.

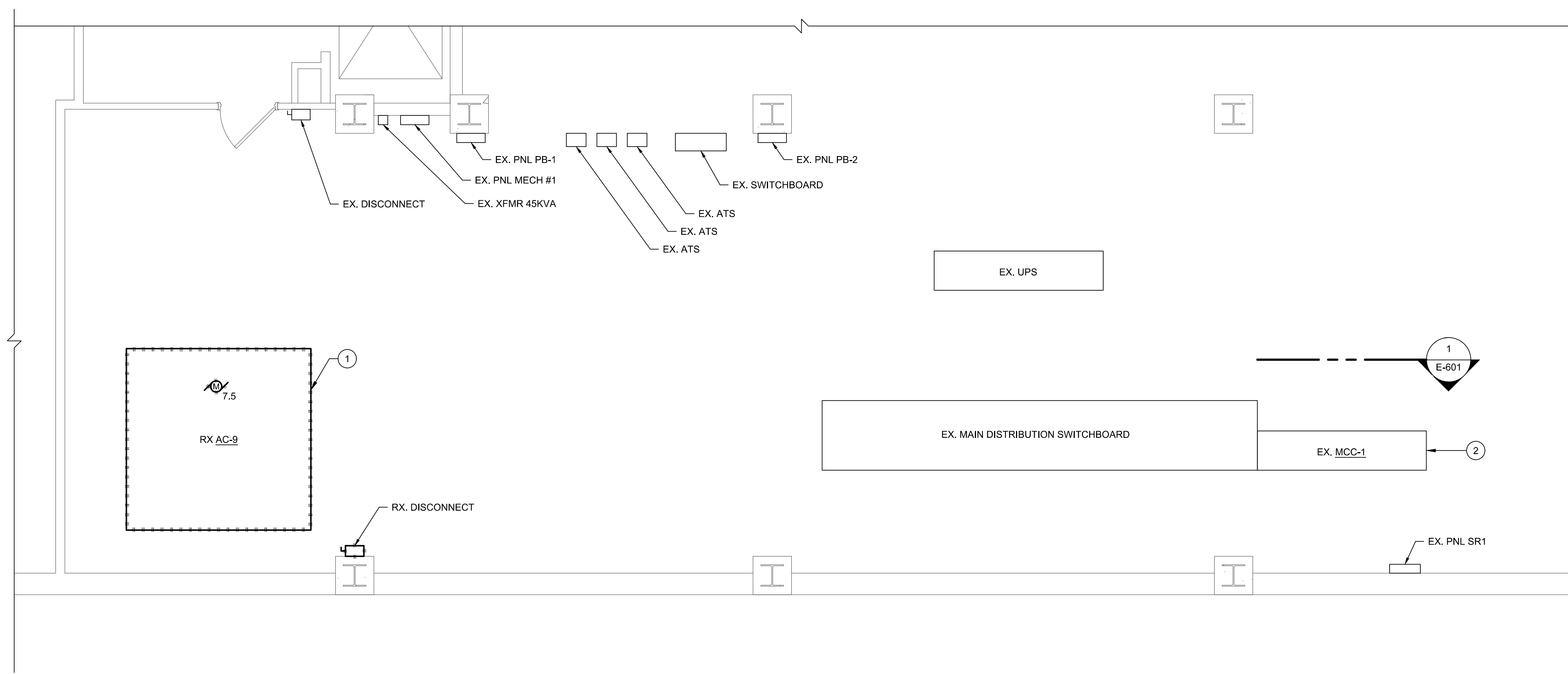
**UNIFORM CODE STATEMENT**  
 TO THE BEST OF THE REGISTERED DESIGN PROFESSIONAL'S KNOWLEDGE, BELIEF, AND PROFESSIONAL JUDGEMENT, THESE PLANS AND/OR SPECIFICATIONS ARE IN COMPLIANCE WITH THE 2020 UNIFORM CODE OF NEW YORK STATE.



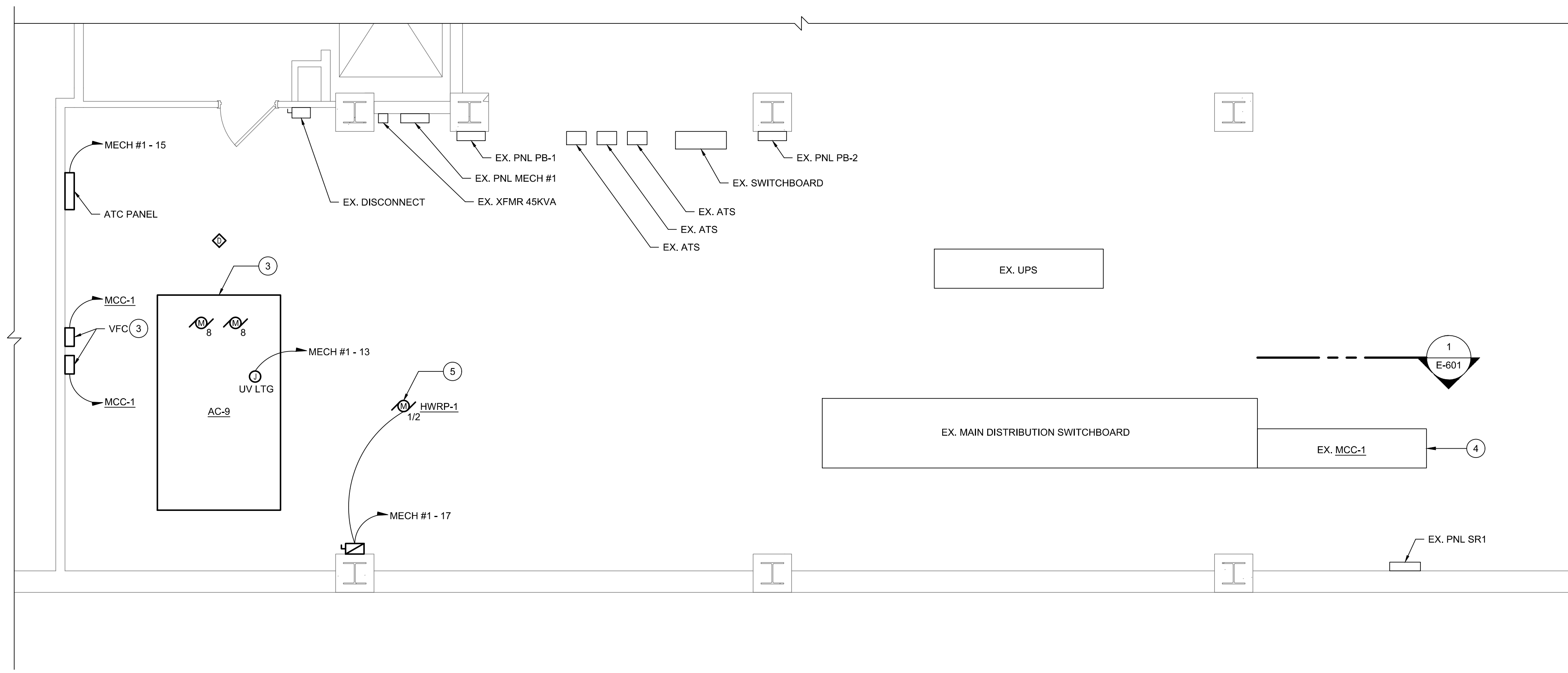
REGISTRATION EXPIRES:  
 05/31/2025

**CONTRACT:**  
**HVAC**  
**TITLE:**  
 REPLACE AIR HANDLER,  
 BASEMENT,  
 44 HOLLAND AVE OB  
**LOCATION:**  
 HOLLAND AVE OFFICE BUILDING  
 44 HOLLAND AVE  
 ALBANY, NY  
**CLIENT:**  
 OFFICE OF MENTAL HEALTH

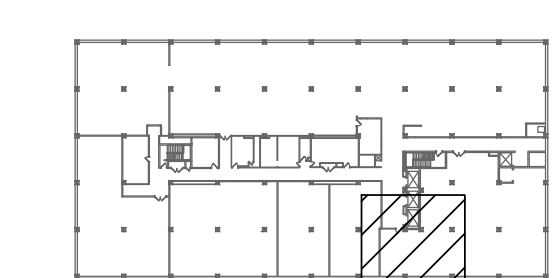
- DRAWING NOTES:**
- REMOVE EXISTING ELECTRICAL CONNECTION TO AC-9. REMOVE CONDUIT AND WIRING BACK TO MCC.
  - REMOVE EXISTING MOTOR CONTROL CENTER PLUG-IN UNIT SERVING AC-9. EXTEND 3/4" CW 3#12+1#12 GROUND FROM EACH VFC TO MCC-1.
  - MAKE ALL FINAL ELECTRICAL CONNECTIONS TO AC-9. INSTALL VARIABLE FREQUENCY CONTROLLERS FURNISHED WITH AC-9.
  - PROVIDE (2) 3P-30A CIRCUIT BREAKER FEEDER UNITS COMPATIBLE WITH EXISTING 277/480V SQUARE-D MODEL 3 MCC. CONTRACTOR MAY FURNISH UL LISTED RECONDITIONED AFTER-MARKET MCC BUCKETS OR HAVE A UL-LISTED ASSEMBLER FABRICATE EQUIVALENTS. PROVIDED ALL ITEMS TO MEET ORIGINAL UL INTENT AND SQUARE D MODEL 3 RATINGS.
  - MAKE ALL FINAL CONNECTION TO PUMP. PROVIDE 120V MAGNETIC MOTOR STARTER.



1 PART PLAN - BASEMENT REMOVALS  
 E-101 / SCALE: 1/4" = 1'-0"



2 PART PLAN - BASEMENT  
 E-101 / SCALE: 1/4" = 1'-0"



**KEY PLAN**  
 SCALE: NONE

MARK	DATE	DESCRIPTION
1	05-08-2025	ADDENDUM1
	1-21-2025	FINAL SUBMISSION

PROJECT NUMBER: **47608**

DESIGNED BY: MGP  
 DRAWN BY: MGP  
 FIELD CHECK:  
 APPROVED:  
 SHEET TITLE:  
**PART PLANS - BASEMENT**

DRAWING NUMBER:  
**E-101**

SHEET 11 OF 12